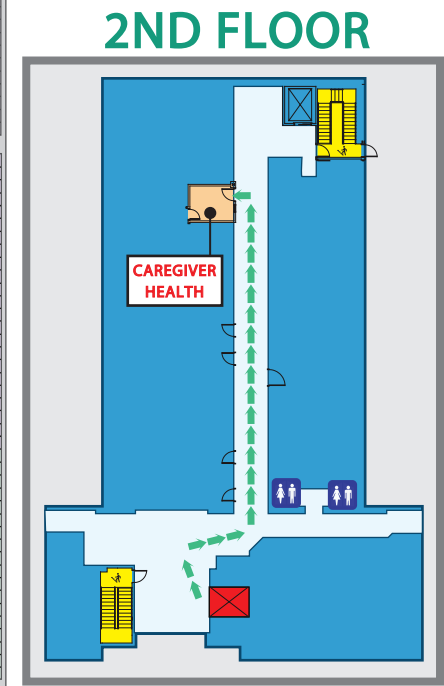
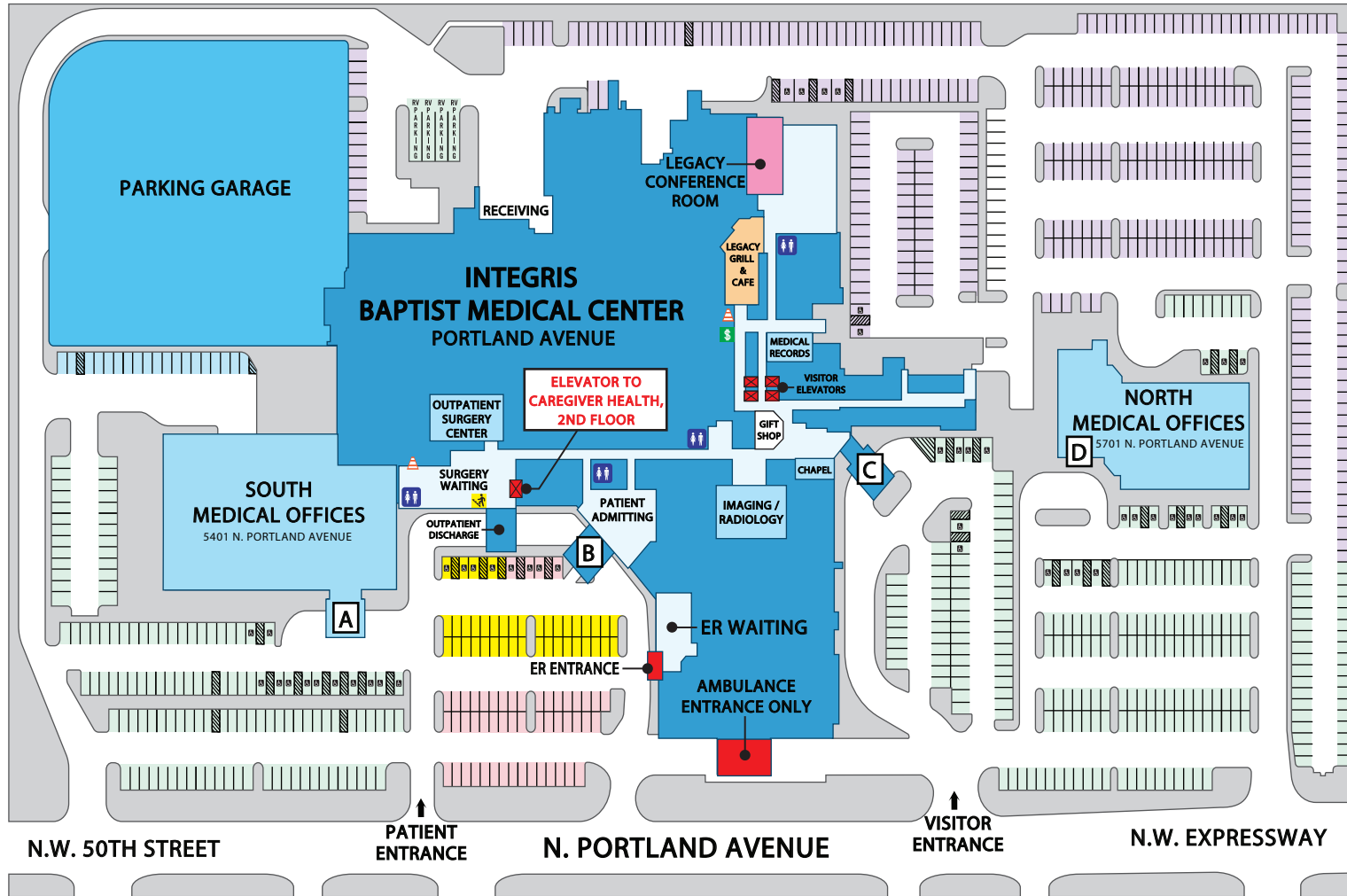


# PROFILE OF SERVICES

- AMBULATORY INFUSION CENTER
- EMERGENCY SERVICES
- HEALTHY HEART CENTER - CARDIAC
- IMAGING SERVICES
- INTEGRIS JIM THORPE REHABILITATION
- ORTHOPEDIC SURGERY
- ROBOTICS SURGERY
- SURGICAL CARE UNIT

**INTEGRIS**  
HEALTH  
PORTLAND AVENUE



## LEGEND

- ENTRANCES:**
- A** SOUTH MEDICAL OFFICES
  - B** PATIENT ENTRANCE (PARKING LOT B)
  - C** VISITOR ENTRANCE (PARKING LOT C)
  - D** NORTH MEDICAL OFFICES

- PARKING:**
- Yellow square:** CAREGIVER HEALTH RESERVED PARKING
  - Light blue square:** ER & PATIENT PARKING
  - Light purple square:** VISITOR PARKING
  - Light green square:** EMPLOYEE PARKING

- CONVENIENCES:**
- Blue person icon:** BATHROOM
  - Red 'X' icon:** ELEVATORS
  - Green '\$' icon:** ATM
  - Orange triangle icon:** VENDING

