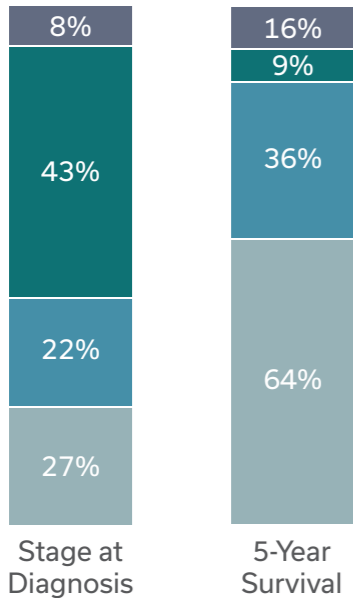


## Stage at Diagnosis and 5-Year Survival Rate\*



- Early (localized - confined to primary site)
- Regional (spread to regional lymph nodes)
- Distant (cancer has metastasized)
- Unstaged tumors

\*Statistics according to the American Lung Association

"Lung cancer has one of the lowest five-year survival rates because cases are often diagnosed at later stages, when the disease is less likely to be curable."

ALA State of Lung Cancer

# 28.4%

U.S. average five-year survival rate for all stages\*

\*Lung Cancer Survival Rate 2021: [seer.cancer.gov/statfacts/html/lungb.html](https://seer.cancer.gov/statfacts/html/lungb.html). Accessed December 14, 2021

## Lung Nodule Team

Our board-certified physicians specialize in pulmonary nodule evaluation and advanced diagnostics, including ION robotic bronchoscopy and EBUS (endobronchial ultrasound). Each patient receives a comprehensive assessment using advanced risk tools, imaging and clinical history to guide personalized care. This expert, patient-centered approach supports timely and appropriate interventions. Through a coordinated, multidisciplinary model, we offer seamless access to a wide range of specialties – ensuring high-quality, comprehensive care from diagnosis through treatment.



**Obaid Ashraf, M.D.**



**Ahel El Haj Chehade, M.D.**



**Nathaniel G. Moulton, M.D.**



**Yasir Usman, M.D.**



### INTEGRIS Health Medical Group Baptist Pulmonary Medicine

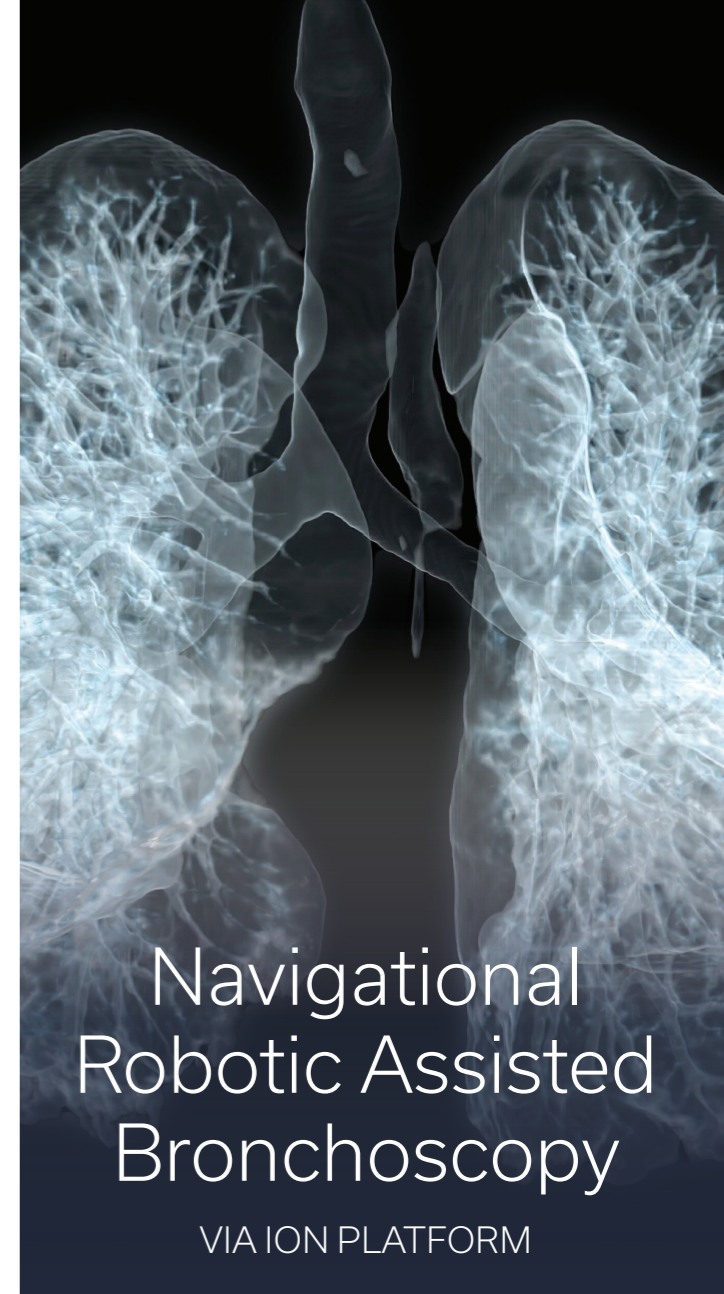
3366 NW Expressway  
Building D • Suite 660  
Oklahoma City, OK 73112  
405-947-3345

### INTEGRIS Health Southwest Medical Center

4401 S. Western  
Oklahoma City, OK 73109

### INTEGRIS Health Lung Nodule Navigator

405-951-8531  
Fax 405-815-6993



# Navigational Robotic Assisted Bronchoscopy

VIA ION PLATFORM



**Patient referrals**  
**405-947-3345 • 405-815-6993 fax**

## Lung Care Advanced

INTEGRIS Health now offers the latest advancement in minimally invasive peripheral lung biopsy. Robotic navigational bronchoscopy using the ION platform is designed to access hard-to-reach areas.

Robotic navigation has changed conventional bronchoscopy methods by allowing a deeper look into the lungs. Its precision catheter control offers access to smaller outer lung nodules.

And by using the body's natural openings, the risk of lung collapse is greatly decreased compared to percutaneous biopsy.

## Expanding Your Reach

The ION catheter's intuitive, flexible design allows the specialist to go



where other bronchoscopes have been unable in the past. Its shape-sensing technology increases diagnostic capabilities, enabling a more precise biopsy.

When used with lung cancer screening, ION supports early diagnosis and staging of the lung cancer.

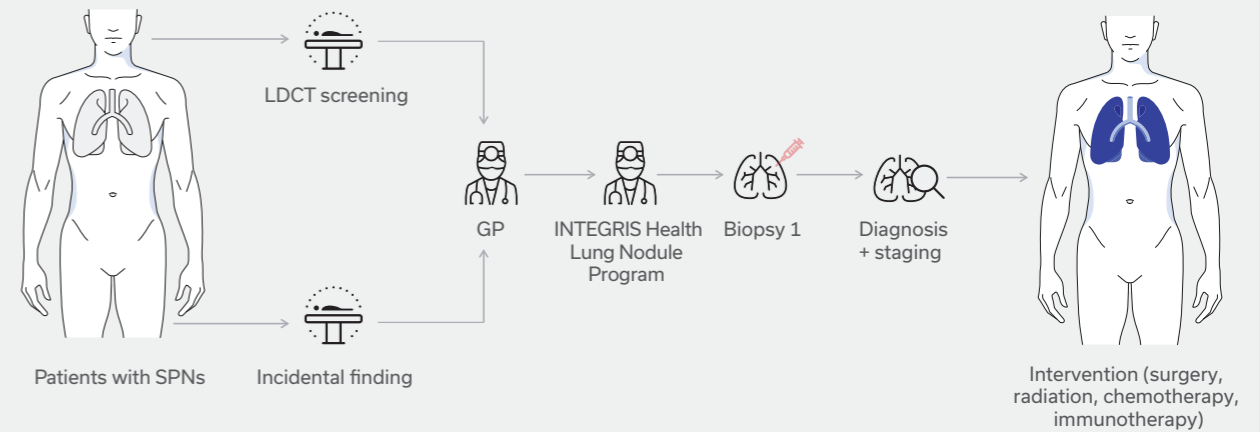
## Patient Benefits

In the past, patients endured peripheral lung lesion biopsy via live CT scan imaging with a needle entering the chest wall from outside the body. This method increased the risk of lung collapse, often leading to hospitalization.

Robotic navigational bronchoscopy offers new benefits to the patient.

- Minimally invasive lung biopsy
- Ability to biopsy previously inaccessible nodules
- Earlier lung cancer detection resulting in improved outcomes and survival rates
- Marking lung nodules to make surgery quicker
- Mediastinal staging using endobronchial ultrasound bronchoscopy

## Patient Pathway



## Program Highlights

Our advanced lung nodule program provides cutting-edge diagnostic care using the ION robotic bronchoscopy platform – a minimally invasive technology that precisely navigates and samples even the smallest, hardest-to-reach nodules. Led by a fellowship-trained interventional pulmonologist, our expert team combines clinical skill with leading-edge innovation. We also use advanced tools like cryobiopsy and Cios 3D imaging to enhance sampling and accuracy. In collaboration with oncologists and thoracic surgeons, we deliver coordinated, personalized care from diagnosis through treatment. Since launching in 2023, our program has quickly become one of the most experienced in the state for early lung nodule detection and evaluation.